

USHA Root CA Certificate
Installation Guide

Revision: A
Date: Jan. 20, 2004

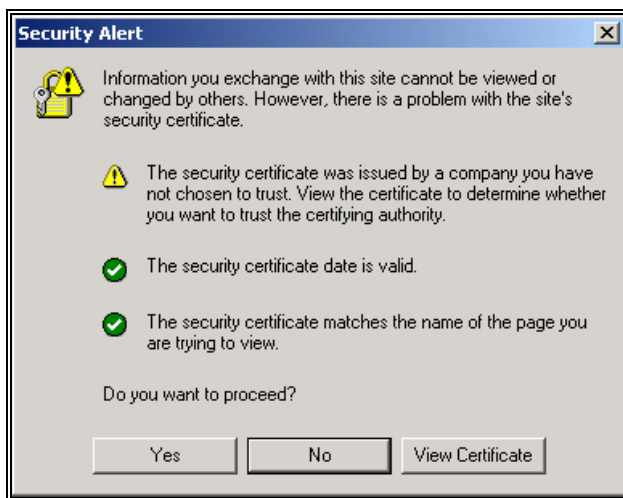
Index

A. Before Installation	3
B. USHA root CA installation for Internet Explorer	5
C. USHA root CA installation for Netscape	8
D. USHA root CA installation for Java Plug-in	10

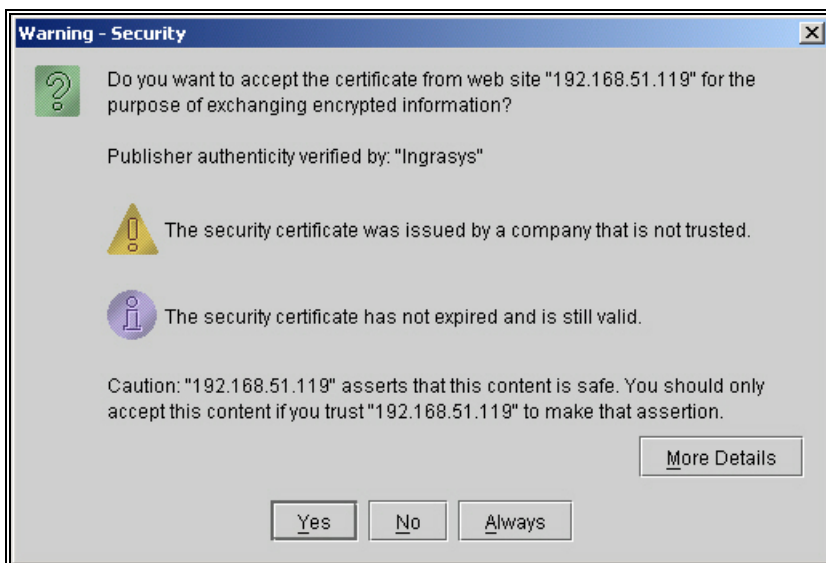
A. Before Installation

If you don't install the USHA Root CA Certificate into your browser or JAVA plug-in, you will get the following warning message box while browse the secure web page (https://) of USHA. If you ignore the warning message and click "Yes", the SSL secure connections are still functional.

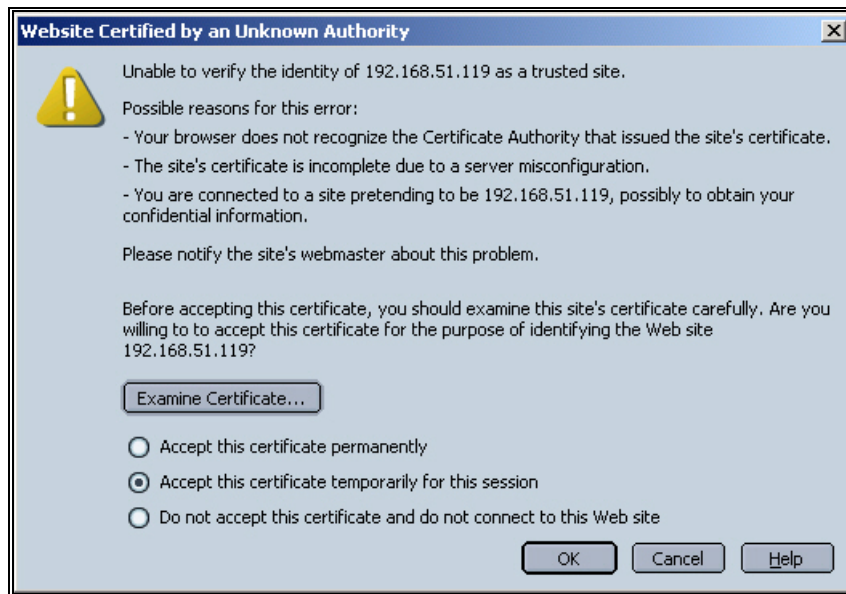
- **Internet Explorer Warning Message Box**



- **Java Applet Warning Message Box**



- **Netscape Warning Message Box**



B. USHA root CA installation for Internet Explorer

Please follow the below steps to install USHA root CA for Internet Explorer.

1. Open Internet Explorer and type: [http://\(IP\)/rootcert.html](http://(IP)/rootcert.html), see Figure B-1. Click the first selection, “**Root CA Certificate of USHA**”.



Figure B-1

2. Select “**Open this file from its current location**” and click “OK”, see Figure B-2.

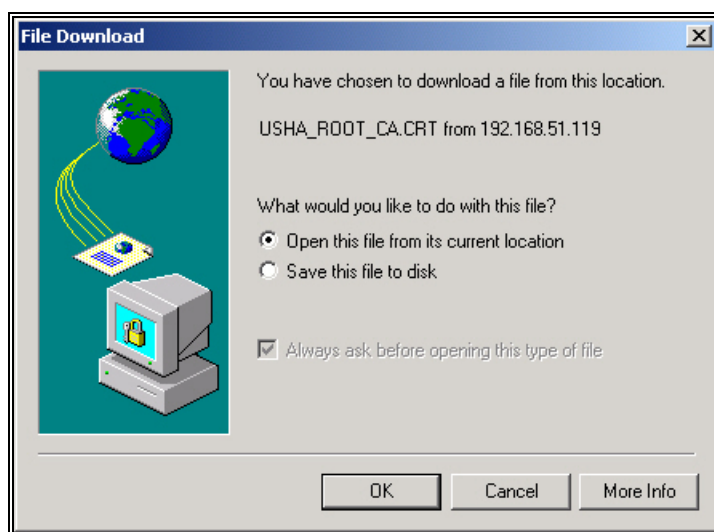


Figure B-2

3. Click “Install Certificate...” as Figure B-3.

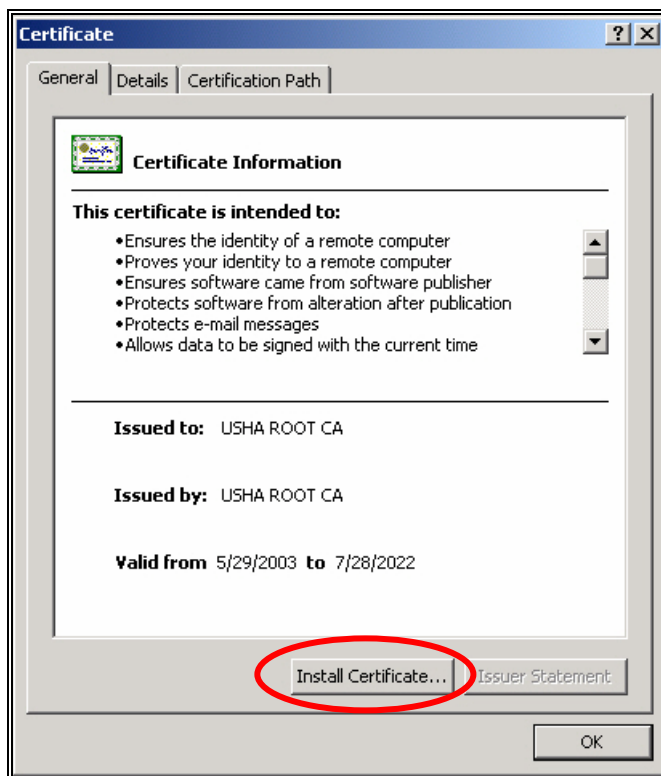


Figure B-3

4. Please follow the instruction of the Certificate Import Wizard and Click “Next”, see Figure B-4.



Figure B-4

5. Select “Automatically select the certificate store based on the type of certificate”, and click “Next”, see Figure B-5.

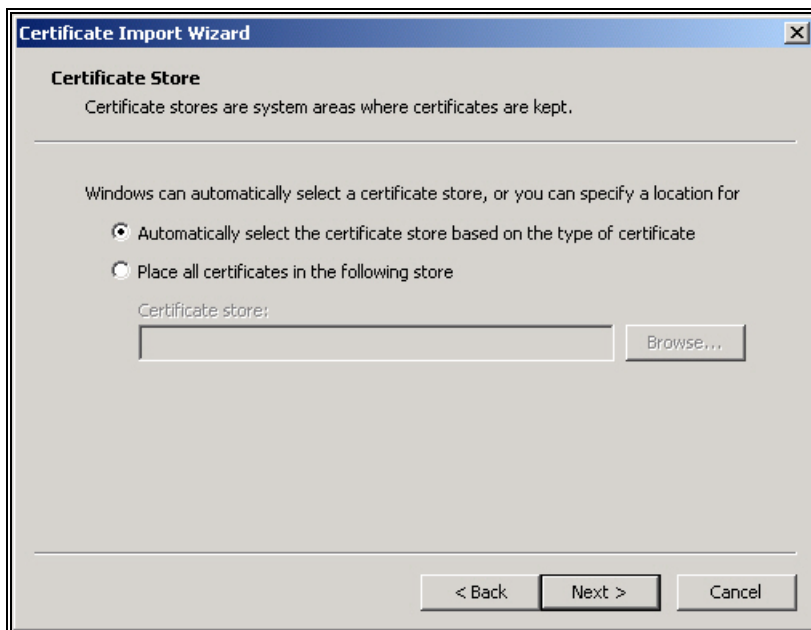


Figure B-5

6. Click “Finish” , and then click “OK” to complete the installation, see Figure B-6 and B-7.



Figure B-6

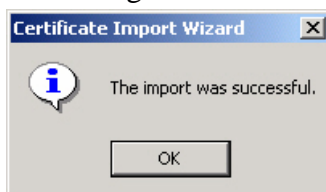


Figure B-7

7. Now, you can request a privacy web connection by typing an URL [https://\(IP\)/](https://(IP)/).

C. USHA root CA installation for Netscape

Please follow the below steps to install USHA root CA for Netscape.

NOTE: This instruction is for Netscape 7.0.

1. Open Netscape and type: [http://\(IP\)/rootcert.html](http://(IP)/rootcert.html), see Figure C-1. Click the first selection, “**Root CA Certificate of USHA**”.

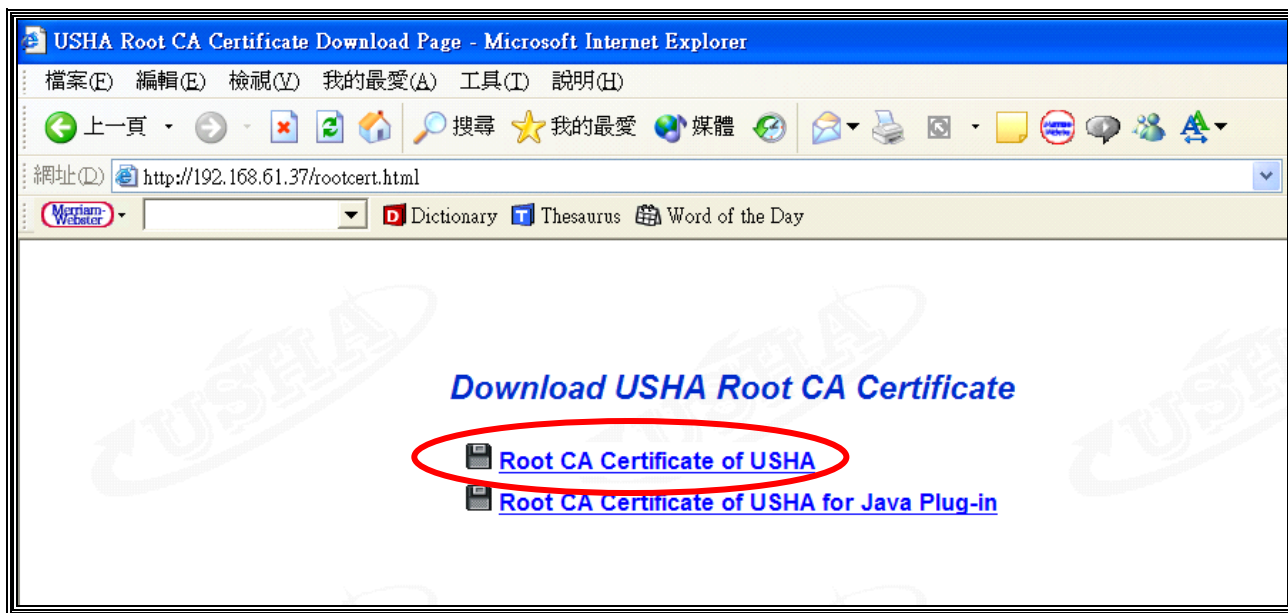


Figure C-1

2. Select “**Save it to disk**” and Click the “**OK**” button to select a folder for saving the certificate, see Figure C-2.

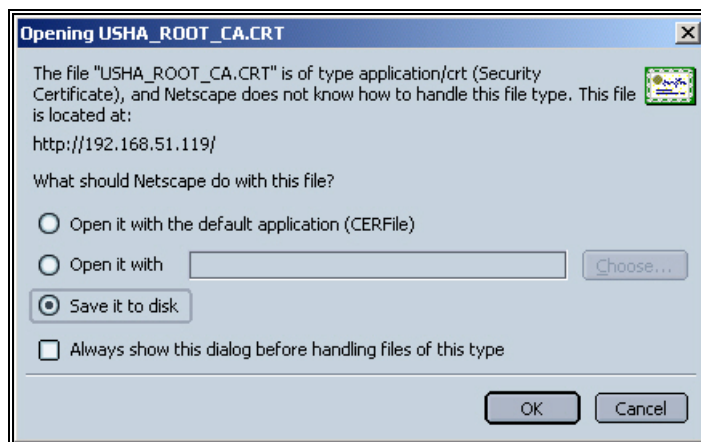


Figure C-2

3. A message box, as Figure C-3, appears for indicating that the download has started.

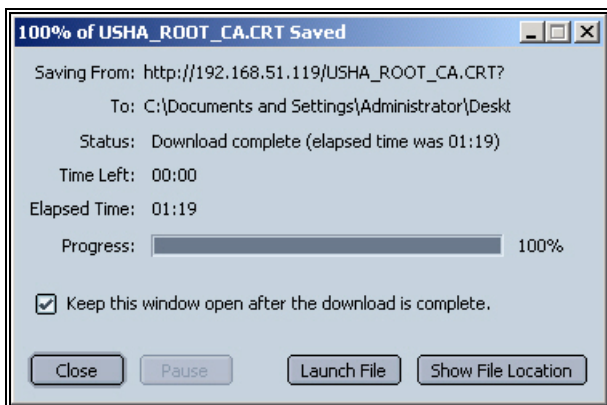


Figure C-3

4. When the downloading is finished, please close the download message box and launch the Netscape program. Open the USHA Root CA certificate from “**File -> Open File...**”, see Figure C-4.

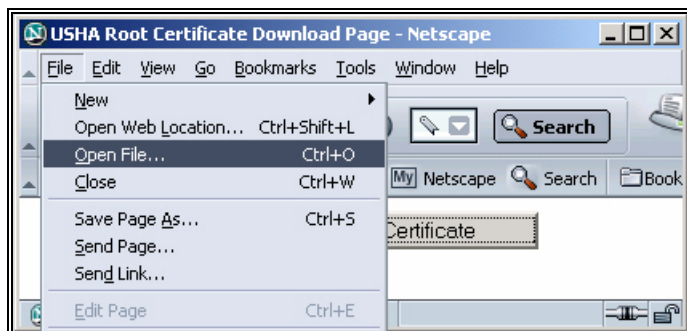


Figure C-4

5. Select “**Trust this CA to identify web sites**” and click “**OK**”, see Figure C-5.



Figure C-5

6. Now, you can request a privacy web connection by typing an URL [https://\(IP\)/](https://(IP)/).

D. USHA root CA installation for Java Plug-in

Please follow the below steps to install USHA root CA for Java Plug-in.

1. Open your browser and type: [http://\(IP\)/rootcert.html](http://(IP)/rootcert.html), see Figure D-1. Click the second selection, “**Root CA Certificate of USHA for Java Plug-in**”.



Figure D-1

2. Choose “**Save it to disk**” and select the “**lib\security**” subdirectory in your Java Plug-in program folder for saving the certificate. By Default, Java Plug-in is installed in “C:\Program Files\Java\j2re1.4.xx”, see Figure D-2.

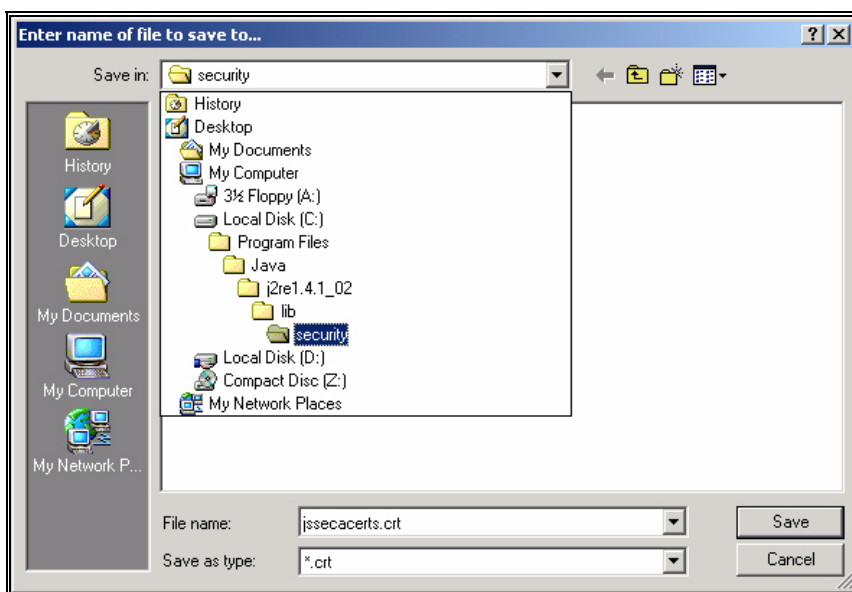


Figure D-2

3. **Rename** the certificate file “jssecacerts.crt” to “jssecacerts”, see Figure D-3.

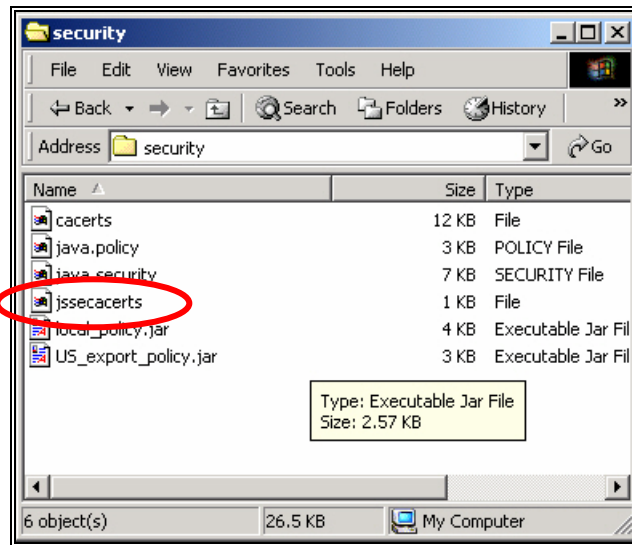


Figure D-3