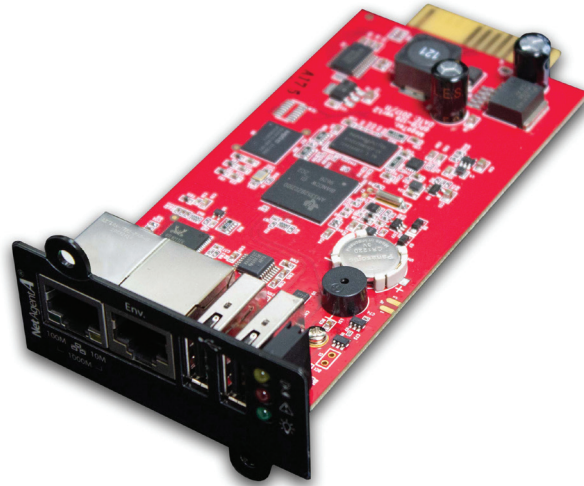




UPS Remote Management Card

Compatible with SC and FN2 UPS Models



UPS Remote Management Card Advantages:

- **Real-time UPS Monitoring**
Falcon's UPS remote management card facilitates secure remote UPS status monitoring via SNMP management software, Modbus or web browser.
- **Event History and Data Logs**
Monitor the utility power, UPS output, battery voltage and much more with the integrated data logging that can be exported for analysis.
- **Flexible Configuration**
Easy installation automatically assigns IP Address via DHCP or manually configurable via supplied discovery tool. Compatible with multiple protocols including SSH, SNMP and includes MIB support.
- **Remote Shutdown Capability**
Supports safe shutdown of multiple workstations or servers during prolonged power outages.
- **Event Notification & Scheduling**
Provides utility power and UPS events including outages, UPS operating modes and status via email notification.
- **Accessories**
Available accessories include environmental sensors to monitor temperature and humidity at UPS installation site.

Model Number	BA506
Power	
Input Voltage	5.3 to 40Vdc
Input Power	9 Watts
Hardware	
CPU	ARM Cortex-A8, 32-bit, 1Ghz
Memory	NAND Flash 512 MB SDRAM 512 MB
Network	10M/100M/1000M UTP
Communication Ports	RJ45 for EMD Device, 1X RJ45 for LAN, 1X
USB	USB2.0 Type A, 2X Note: For use with compatible accessories only.
RTC	Battery Backup RTC
Software	
UPS Protocol	MegaTec
Network Protocols	HTTP, SSH, SNMP, DHCP, Modbus
Supported MIB	UPS MIB (RFC1628), PPC MIB
Environmental	
Operating Temperature	0°C to 60°C (32°F to 140°F)
Humidity	10 to 90% Non-Condensing
Dimensions H x W x D inches (mm)	5.1 x 2.4 x .75 (130 x 60 x 19)
Agency Approvals	CE, FCC Class B

